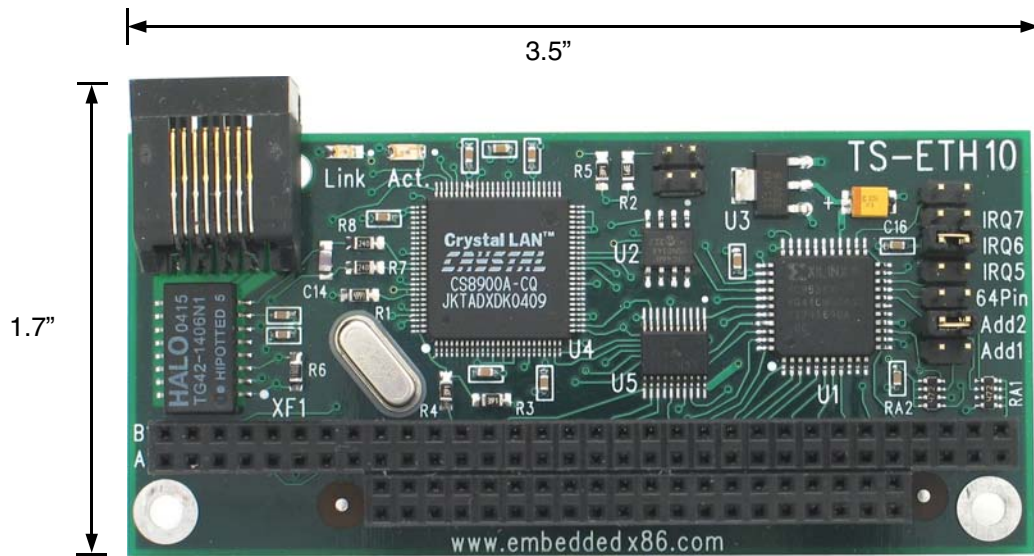


## Getting started with the TS-ETH10

The TS-ETH10 a PC/104 daughter card that provides one 10 base-T Ethernet adapter running at 10 MBit.

I/O address and IRQ's are jumper selectable (IRQ's 5, 6, 7 & 12 available)  
 Cirrus CS8900A 16-bit Ethernet chip with settings saved in EEPROM  
 Indicator LED's for link and activity.  
 Linux , NetBSD and DOS drivers available.



<u>I/O address selection</u>		<u>I/O Address</u>
<u>Add1</u>	<u>Add2</u>	
Off	Off	0x300
Off	On	0x310
On	Off	0x320
On	On	0x330

<u>IRQ jumper</u>	<u>IRQ selected</u>
None	IRQ12
IRQ5	IRQ5
IRQ5	IRQ6
IRQ7	IRQ7

The 64Pin jumper allows TS-7000 (ARM) products to interface with the TS-ETH10 in 16-bit mode using an 8-bit (64 pin) connector. All other (x86) products require the full 104 pin PC/104 connector.