

OVERVIEW

TS-GSM1 is a PC/104 (standard format) peripheral board that works with all Technologic Systems x86 and ARM embedded PCs to provide wireless Internet connectivity through GSM cellular service providers. Hardware features and specifications include:

- ✓ Standard 16C550 COM port interface
- ✓ Standard baud rates up to 115.2 Kbaud supported - 230 Kbaud supported in x2 mode
- ✓ Jumper configurable as COM1 through COM8
- ✓ Standard GSM SIM card socket
- ✓ Includes hardware standoffs for mounting modem module

Use one of the supported Sony-Ericsson cellular modem modules with this board for an off-the-shelf, low-cost solution:

- ✓ Sony-Ericsson **GR47** dual band GSM cellular modem (Europe)
- ✓ Sony-Ericsson **GR48** dual band GSM cellular modem (North America)
- ✓ Sony-Ericsson **GR64** quad band RoHS GSM cellular modem (Europe and North America)

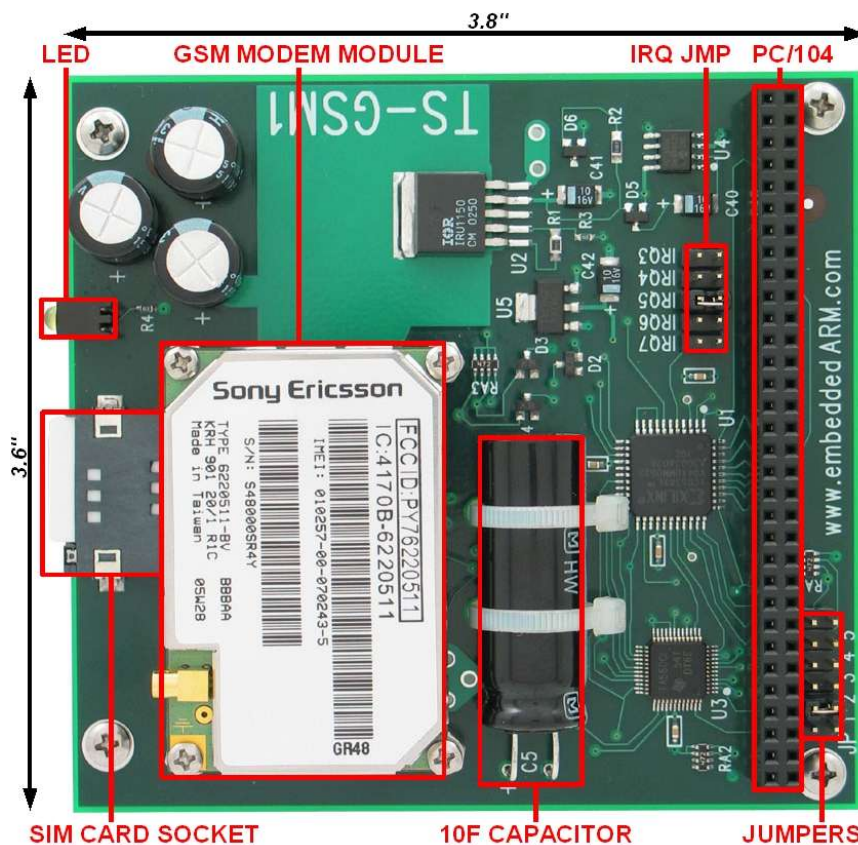


Notes

The Sony-Ericsson **GR64** cellular modem module is a **RoHS** quad band GSM/GPRS Class 10 compact Radio. For designs requiring RoHS (Restriction of Certain Hazardous Substances) compliance it will replace either the GR47 or GR48.

The **GR47** and **GR48** modems are dual band GSM/GPRS Class 8 and allow downlink through up to 4 time slots (channels) maximum and uplinks can use 1 time slot maximum -- [4+1]. Each time slot will support about 12 Kbaud.

HARDWARE CONFIGURATION



TS-GSM1 shown with optional Sony-Ericsson GR48 cellular modem and Panasonic Gold 10 farad capacitor

Jumper settings for COM/IO selection

COM	I/O	JP1	JP2	JP3
COM1	3F8	OFF	OFF	OFF
COM2	2F8	ON	OFF	OFF
COM3	3E8	OFF	ON	OFF
COM4	2E8	ON	ON	OFF
COM5	3A8	OFF	OFF	ON
COM6	2A8	ON	OFF	ON
COM7	3A0	OFF	ON	ON
COM8	2A0	ON	ON	ON

Jumper settings for PLD registers base address

Base Address	JP4
0x140 - 0x14F	OFF
0x190 - 0x19F	ON

Status of modem power after system reset

Modem status	JP5
Turned OFF	OFF
Turned ON	ON

HARDWARE CONFIGURATION

Jumpers are used to select one of eight standard COM port addresses for easy installation. The standard SIM (Subscriber Identity Module) card socket allows instant installation of a standard GSM SIM card from any GSM cell phone.

The on-board LED indicates modem status and can assume three states:

LED State	Description
Solid OFF	Modem is powered OFF
Solid ON	Modem is powered ON, but has no connection to the network
Blinking at 2Hz	Modem is powered ON and connected to the network

In addition, the optional 10 Farad capacitor provides enough voltage for the modem internal registers in the absence of the main power supply. That "backup" power keeps the internal register in nonvolatile state, enabling faster network connection after modem reset or power off.

BASE PLD REGISTER MAP: TS-GSM1

The TS-GSM1 implements 5 PLD registers which appear at the selected base addresses. All PLD registers are only 4 bits wide (bits 0-3). Bits 4-7 are not driven and are undefined.

I/O Addr	Description	Data	Bits and such
Base + 0	Board identifier	Read only	Always returns Hex 0x9
Base + 1	PLD version	Read only	Returns a Hex 0x6 at first access Returns a Hex 0x7 at second access Returns a Hex 0x8 at third access Returns a Hex 0xV at fourth access *where V = PLD Version
Base + 2	Jumpers register	Read only	Bit 3 = JP4 (1=on, 0=off) PLD base address Bit 2 = JP3 (1=on, 0=off) COM/IO decode Bit 1 = JP2 (1=on, 0=off) COM/IO decode Bit 0 = JP1 (1=on, 0=off) COM/IO decode
Base + 3	Status register	Read only *Bit 0 is R/W	Bit 3: JP5 status (1=on, 0=off) Bit 2: LED status (1=on, 0=off) Bit 1: Modem power status (1=on, 0=off) Bit 0: Modem power control (1=on, 0=off) (R/W)
Base + 8	Baud Rate control register	R/W	Bit 0: If this bit is set, then the baud clock to the 16C550 UART is doubled, allowing speeds up to 230 Kbaud. This bit is set to zero at reset.



Note

Bit 0 at [Base + 3] controls whether the modem is turned on or off. Even if JP5 is installed and the modem is turned on after system reset, software can still turn the modem off by clearing bit 0. It takes about 750 mS for the modem to change state after bit 0 is changed. Bit 1 at [Base + 3] (Read only) actually indicates the true state of Modem.

DRIVER SUPPORT

The **TS-GSM1** board utilizes standard "GSM AT Modem" commands and provides status and data via the serial COM port. The standard serial 16C550 COM port interface appears as a selectable PC-compatible COM port for software compatibility and no special drivers are required. For example, the TS-Linux distribution already includes Linux drivers for the 16C550 UART chip by default. One can use any terminal emulator, as minicom, to open and configure the serial port in use by this board with the appropriate /dev entry, enabling communication to the modem device plugged on the socket.

The GR48 or GR47 modem, when shipped from Sony-Ericsson, is set to 9600 baud by default. Therefore, the customer must configure the terminal emulator to use 9600 baud the first power up, then can use AT commands to change the baud rate. The speed settings of the modem are nonvolatile, meaning that it keeps the last configuration after power is cycled, even without the 10F capacitor installed.

Testing the GR48 modem

The GR48 has several modes: voice, CSD (dial-up modem), GPRS (TCP/IP), GPRS (embedded TCP/IP) and FAX. The Sony-Ericsson modem uses a SIM card identical to the one found in a GSM cell phone. Insert the SIM card from a GSM cell phone into the TS-GSM1 and the modem device will function on the cell network. The cellular account must have a CSD (circuit-switched-dialup) enabled account. In the US, Cingular and T-Mobile are GSM networks that offer CSD accounts.

Using the module in GPRS (embedded TCP/IP) data mode, which uses the built in TCP/IP stack, will allow you to test the module using CSD. You can run a terminal emulator and enter ATDT commands to make a dial-up modem connection. The modem module and the TS-GSM1 UART must be programmed to run at the same baud rates. Sony-Ericsson ships the modem module at 9600 baud. The modem module can be programmed to run at higher baud rates via an AT command. . For example, the command AT+IPR19200 will set it to 19200. The command AT&W saves the modem settings. The following are some useful GR48 commands of interest:

- ✓ AT+CSQ<CR> : gets signal strength
- ✓ AT+CREG<CR> : gets registration status
- ✓ AT+IPR?<CR> : shows baud rate setting
- ✓ AT+COPS?<CR> : shows cell network name
- ✓ AT+CFUN=1<CR> : enables all functionality of the device, including RF

For further information on modem configuration and AT commands, refer to the **TS-GSM1** webpage or to the **GSM Modem Manual** provided by the manufacturer. Also, the communication examples found on **TS-MODEM Manual** can be applied to this board.

CONTACT TECHNOLOGIC SYSTEMS

16610 East Laser Drive #10
Fountain Hills, AZ 85268
TEL 1.480.837.5200
FAX 1.480.837.5300

www.embeddedARM.com
support@embeddedARM.com

DOCUMENT HISTORY

04.04.2006 – CREATED

05.05.2006 – Minor corrections + Testing section added